



Homed:In

18 Station Road, Southwater, RH13 9HQ



The Fieldings

Southwater, Horsham, RH13 9LY

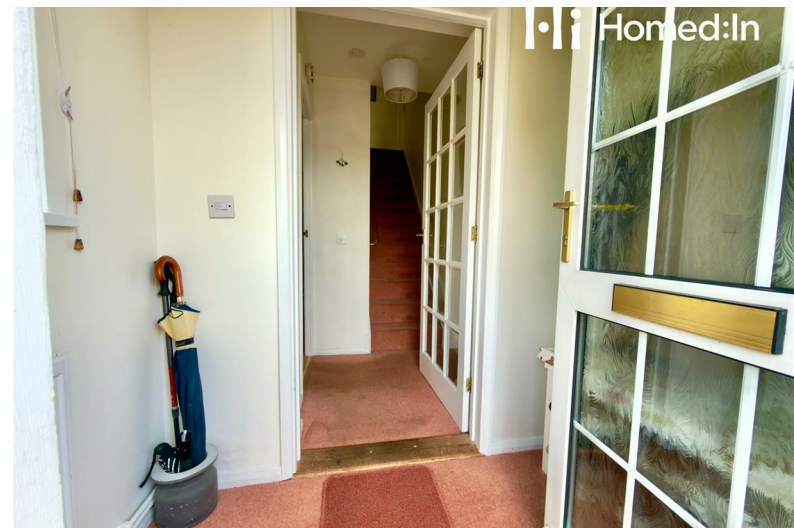
£500,000



The Fieldings



Homed:In



Homed:In

Description

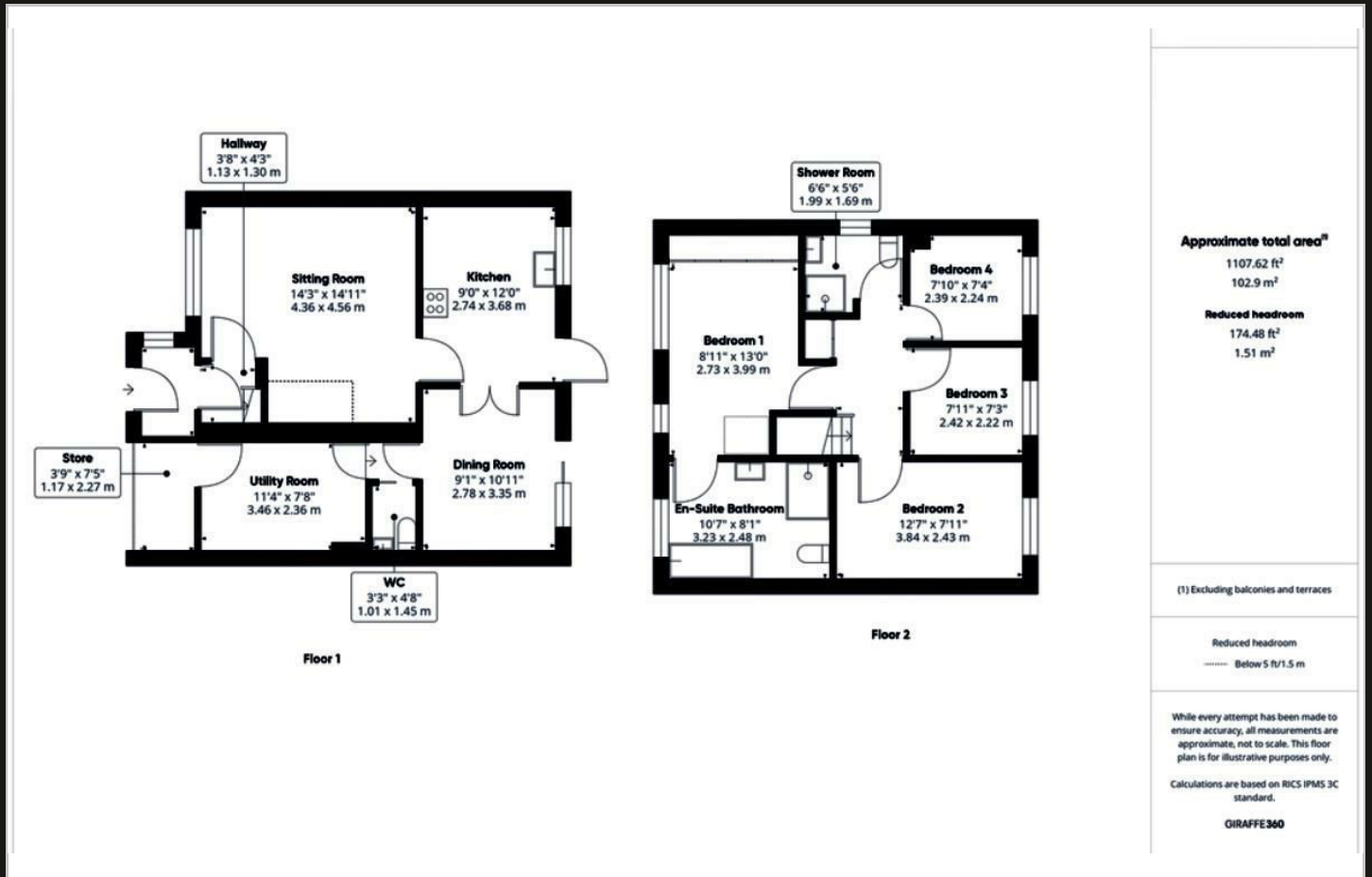
- Very Versatile and Well-Rounded Family Home
- Sunny, Secluded South-facing Garden
- Super Large En-suite
- Quiet Cul de Sac, Safe for Pets and Children to Enjoy
- Professional Video Tour in Tab or our Website
- Garage Conversion
- 4 Balanced Bedrooms over Generous Landing
- Location is King! Quick Access to Idyllic Country Park
- An Ideal Option for Young Growing Families



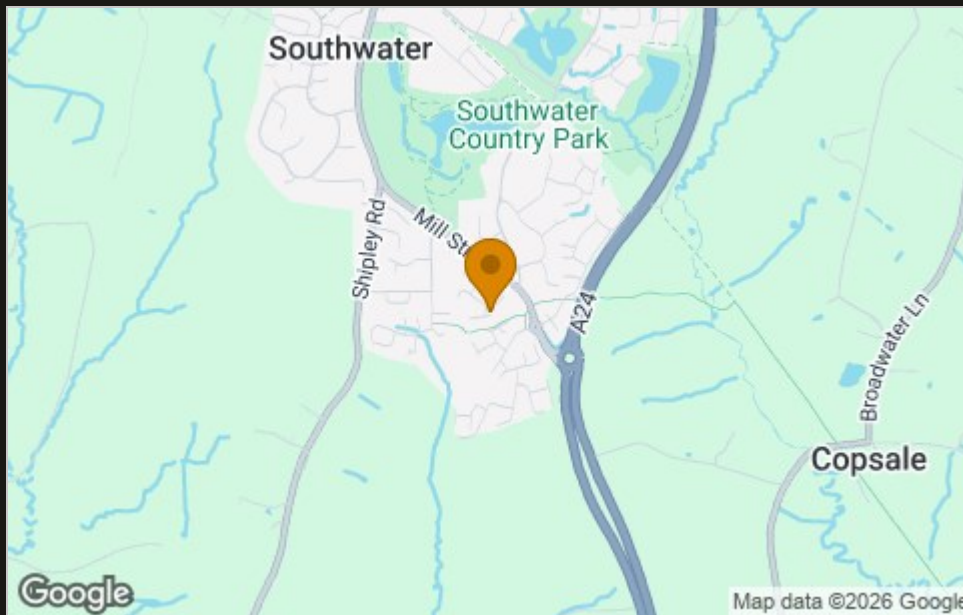
Homed:In



Floor Plan



Area Map



Viewing

Please contact our Horsham Office on 01403 597595 if you wish to arrange a viewing appointment for this property or require further information.

These particulars, whilst believed to be accurate are set out as a general outline only for guidance and do not constitute any part of an offer or contract. Intending purchasers should not rely on them as statements of representation of fact, but must satisfy themselves by inspection or otherwise as to their accuracy. No person in this firm's employment has the authority to make or give any representation or warranty in respect of the property.

To **GET A FREE VALUATION** Call us on: **01403 597595**
or email us at: info@homedin.co.uk

Energy Efficiency Graph

